



zmwWinTricks Version 1.1

WinTricks allows to change setting of external window(s).

Let's install zmwWinTricks Plugin.

Step 1- Open VisualNEO-Win after placing zmwWinTricks into your plugins folder.

Step 2- Click on Options Menu and select Install-Plugins.

Step 3- In the Plug-Ins panel, click on install button and select zmwWinTricks.nbp

Step 4- If zmwWinTricks can be seen in installed Plug-Ins list it means zmwWinTricks has been installed

Registering a zmwWinTricks Plugin.

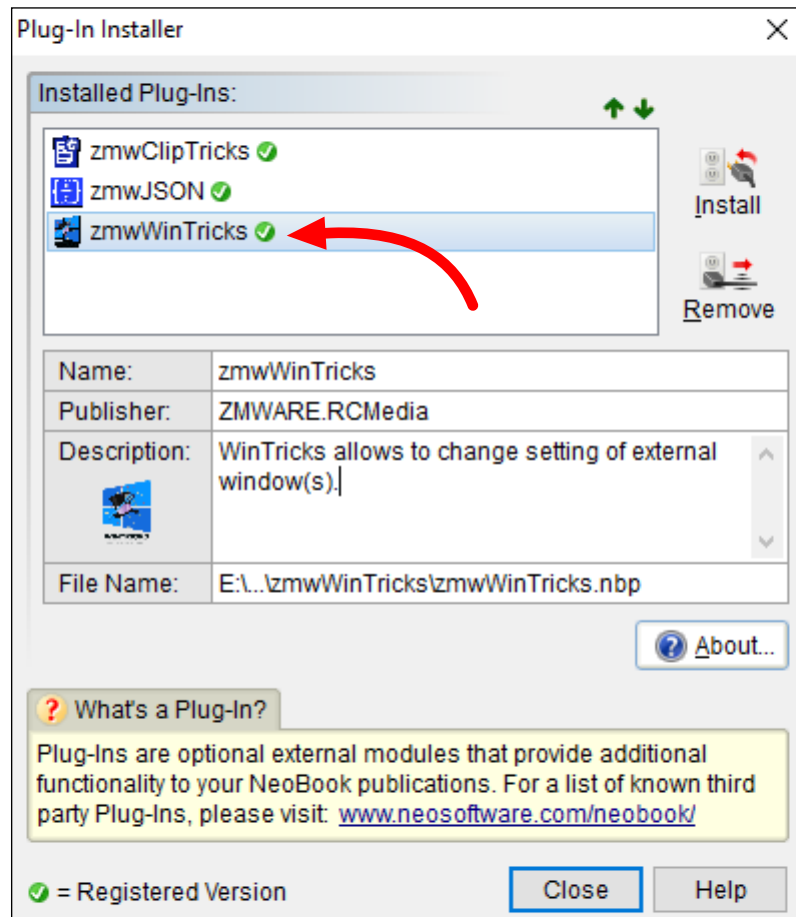
Step 1- In Plug-Ins Installer window. Select zmwWinTricks from Installed Plug-Ins list

Step 2- Click on Register this Plug-In button and the Registration Dialog will appear which contains Registration ID.

Step 3- Send us this Registration ID with Plugin Info to contact@zmware.rcmediaservices.net.

Step 4- You will receive an email containing your Unlock Code within two business days. Please know that this is a manual process, so please be patient

Step 5- Type your Unlock Code into the Registration Dialog's Unlock Code field and click the Register button. A green checkmark will display indicating that you are registered.



Action Overview:

zmwGetComputerRunningDuration:

Stores computer's running duration into your variable.

zmwGetWindowList

Stores all top-level visible window(s) handle/ class name/ title into your variable.

Note: Windows having no title will not be added in the list. Off screen windows with titles will be listed, but not visible.

zmwGetWindowHandle:

Searchs for a window that has your defined title. if found stores the handle of found window into your variable otherwise stores 0. You can also fetch the window handle of the TaskBar, TrayMenu, Desktop, Shell, last active window, and the currently active window.

zmwGetWindowTitle:

Searchs for a window that has your defined handle and stores the title of found window into your variable. You can also fetch the window title of last active window, currently active window.

zmwGetMeasurement

Gets height / width / top / left of the last active window or defined window handle.

zmwIsWindow:

Stores the state of the last active window or defined window handle into your variable (Maximize, Minimize, Restore, Hide, Show, Enable, Disable).

zmwSetWindowState:

Changes the state of last active window or defined window handle (Maximize Minimize, Restore, Hide, Show, Enable, Disable).

zmwTransparentWindow:

Set the transparency of the last active window or defined window handle.

zmwSendKeys:

Send keys to the last active window or defined window handle.

zmwSetWindowTitle:

Changes title of the last active window or defined window handle.

zmwSetWindowPosition:

Changes position of the last active window or defined window handle.

zmwSetWindowOrder:

Changes order of the last active window or defined window handle.

zmwMoveWindow

Changes height, width, top, left of the last active window or defined window handle.

zmwSetForegroundWindow

Activates last active window or defined window handle. Keyboard input is directed to the window, and various visual cues are changed for the user.

zmwClientToScreen

Converts the client-area coordinates of a specified point to screen coordinates.

zmwScreenToClient

Converts the screen coordinates of a specified point on the screen to client-area coordinates.

Technical Support

This help file contains just about everything you will need to know in order to use zmwWinTricks Plugin effectively. If you should encounter a technical problem or question not covered here, you may send us email at support@zmlware.rcmediaservices.net

When contacting technical support, please include your VisualNeo Win version number, Windows version, zmwWinTricks Plugin version number and a detailed description of the problem and how to reproduce it.

**We intend to add features to this project.
If you have suggestions, please send them our way!**

Thank you for your support.

zmlware.rcmediaservices.net